

**From:** Carolina Mountain Club <enews@carolinamountainclub.org>

**Subject:** August 2016 eNews

**Preheader:** Send Photos For Annual Dinner

**Reply:** enews@carolinamountainclub.org



**Carolina Mountain Club**

*Since 1923*

**eNews** | Hike . Save Trails . Make Friends

August 2016

**In This Issue**

[Maintainers - Making WNC Hiking Possible](#)

[Register For Fall Camporee](#)

[Annual Dinner - Send Pictures](#)

[Wilderness Crew Help Needed](#)

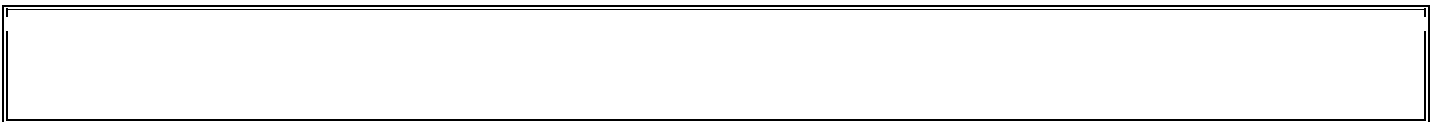
[Service Award Process Streamlined](#)

[Happy Hour!](#)

[Now You See It - Now You Don't](#)

[From The CMC Archives](#)

[MST Photo Contest](#)





# WNC Hiking Paradise Possible Because Of Maintainers

By Ann Hendrickson

Anyone spending any time on the Parkway can see favorite trailheads jammed with cars 7 days a week this time of year. Or, try hiking the AT for a few days and count the actual hours of solitude you found without encountering others enjoying the trail too. The trails in our beloved mountains are no secret.

CMC has the charge to maintain about 450 miles of trails in WNC. Year-to-date, 14,678 hours have been logged by crews and section maintainers. That is the equivalent of what seven full-time employees would work in a year! These maintenance and stewardship activities are essential to the safe use, enjoyment, and sustainability of any trail.

Trail maintenance is not as glamorous as building the trail. There is no "ribbon-cutting" for a trail maintenance program, nor does it win any awards. (CMC does hold an annual appreciation picnic, and volunteers receive recognition awards based on hours worked.)

From late April to September many crews/maintainers focus on the endless job of weed-eating trails, section by section.

According to the Larry Sobel, Bill Falender, and John Whitehouse (Crew Leaders who do a lot of weed "abatement"), it takes approximately an hour to weed-eat 1/3 of a mile of trail! Of course this varies depending on the steepness of the terrain and type of vegetation they encounter. A standard weed-eater weighs about 13 lbs. Add to that a helmet with ear protection and a face screen, a harness to hook the machine to, a pack with your water and lunch, and don't forget extra gas/oil mix to get through the section. I don't know about you, but I prefer the easier tasks of carrying a rock bar and moving a couple tons of rocks on a trail or even raking a privy at a shelter over weed-eating for 6-8 hours. Think about it: carrying heavy, noisy equipment, maybe running into poison ivy, snakes, rocks, carrying the equivalent of a Molotov cocktail of fuel in our pack, getting filthy dirty, and oh, this is also a solitary job. We all have our choices on what to do with our precious free time: go for a hike with our pals, test out a flight at the newest brewery in town, or weed-eat a trail for the day. Let's all be ever so grateful for those who choose the latter.



## Register For Sept. 30- Oct. 1 Fall Camporee

Register now for the fall Mountain Treasures Camporee. The camporee will be held Friday, Sept. 30, and Saturday, Oct. 1, at Appletree Campground near Franklin, NC. A variety of hikes will be offered Saturday and Sunday. Dinner will be shared Saturday night.

The cost for a campsite is \$10 per person for two nights. Barbecue will be offered at a minimal cost on Saturday. Please bring a side dish, dessert or appetizer. Send \$10 to Bev Macdowell to reserve a space. Her address is 166 Mt. Royal Drive Arden NC, 28704

When you send in your reservation, indicate if you want barbecue and what you plan to bring Saturday night. Include your name and email address. If you have a Yeti cooler that could be used to store the barbecue, let Bev Macdowell know.

The CMC camporees are held to recognize the importance of North Carolina's Mountain Treasures. The North Carolina's Mountain Treasures are 41 areas within our Nantahala and Pisgah National Forests that stand out with special conservation, recreation, scenic, and cultural values. The United States Forest Service is now revising the management plan for our public forests in Western North Carolina. The current evaluation of Potential Wilderness Areas (PWAs) is our opportunity to gain better protection for these valuable places.



## Annual Dinner - Send Photos

Send your pictures of CMC hikes from 2015/16 for a slide show to be shown during the annual dinner on Saturday, November 5. Send up to five photos with your name as you want it to appear on the slide show. There will be a prize based on a drawing. The deadline is Saturday, Oct. 29, to submit photos. Send the photos to: Dennis Bass at [dbass3607@gmail.com](mailto:dbass3607@gmail.com)



## Recruiting AT Volunteer Hikers

The club is looking for volunteers to hike various sections of the Appalachian Trail for the purpose of observation and reporting trail conditions. CMC is deeply committed to the AT and in order to maintain the quality of the trail a new system of trail monitoring is being put in place. If you like to hike, you qualify. Look for the new option on the [carolinamountainclub.org](http://carolinamountainclub.org) or "AT Volunteer Hiker".

## AT Trail Maintenance Volunteers

Ever consider taking on a section of the Appalachian Trail to maintain and call your own? There are currently 2 sections open and more to open soon as we're dividing some of the longer sections into smaller areas manage more effectively the workloads. Look for the new option on the website "AT Volunteer Maintainer", or email [atsupervisor@carolinamountainclub.org](mailto:atsupervisor@carolinamountainclub.org).





## Wilderness Crew Jobs Available

By Becky Smucker

If you are a fan of our Wilderness areas, have you considered joining the Wilderness Crew? We could use a few new volunteers, and we are looking for a new crew leader starting in January.

The Wilderness Crew has been working in Shining Rock and Middle Prong Wildernesses for more than eight years now. We generally go out on the 2nd and 4th Saturdays of each month unless there's a scheduling conflict with other CMC events. In Wildernesses, groups cannot be larger than 10, so when we get that many, we split up, but usually we have had 7-8 on a Saturday. We put in 6-8 hours of walk and work. Our three objectives are : 1) be safe, 2) have fun, and 3) get some work done if possible. We're happy to train new members, and we provide safety gear and tools.

This crew was started for two reasons. First, it provides more regular trail work opportunity for individuals who prefer to work Saturdays. Les Love's Saturday Quarterly Crew goes out 5 times/year, (you figure it ut) is a great opportunity to learn basic trail building, and has worked on some awesome projects, but other than that, all our CMC crews meet on weekdays. Second, when the crew started, there was one woman on the Pisgah Friday crew, but all the rest of crew members, and all crew leaders, were male. I thought it would be good to provide broader encouragement for women to participate in this important function. Our crew is fairly well balanced male and female.

In the official Wilderness areas the trails are rougher, and you can't use chain saws, build bridges and shelters, etc., so the other crews didn't like working there. Also, CMC leads lots of hikes in Shining Rock and Middle Prong and the trails needed work, so we took on the task in cooperation with the Forest Service Pisgah District, and the Wilderness Crew was born.

I have been crew leader for more than eight years, and although I have truly enjoyed each day out with the crew, we need some fresh energy in that position. Mike Goodman, who has been a huge help with filling in when I'm not available, has graciously agreed to function as an interim leader if needed to allow time to find and comfortably train the next person.

Most of the Crew Leader job can be learned by anyone with the drive to do so, but here's what's desirable up front:

- Moderately strong hiking ability.
- Comfort with using hand tools in general.
- Love of and respectfor Wilderness.
- CMC membership
- 
- Decent people, communication, and organizational skills.

- Willingness to do the job.  
That's it! The rest can be learned. And remember, you don't have to do everything yourself as we have a wonderful crew in place that you will enjoy working with. There is lots of flexibility in scheduling and structuring the crew, and certainly there are many different ways of doing it well. Mike and I are available to help train. Click hereto see a more detailed job description.  
If you are interested in joining the crew or in the Crew Leader position, please contact me at [bjsmucker@gmail.com](mailto:bjsmucker@gmail.com) or Mike Goodman at [msg\\_53@hotmail.com](mailto:msg_53@hotmail.com). We look forward to hearing from you.



## Service Award Process Streamlined

The CMC Council has voted to update and streamline our Service Award process. Rather than submitting nominations only in the fall using the form distributed through the 4th Quarter Let's Go the Awards Committee, chaired by Marcia Bromberg, will accept recommendations at any time using the "Contact Us" button on the website Home Page. This more informal process will allow us to identify and recognize members throughout the year. In general awards will be given out at major Club events--Hike Leader's Dinner, Spring Social, Maintainer's Picnic, Annual Dinner. To learn more about how to nominate a member for an award and to find out which members have received Service Awards in the past go to <http://www.carolinamountainclub.org/index.cfm/do/pages.view/id/42/page/Service-Awards>



## Hiker Happy Hour - Sept. 13 - Salvage Station - Prizes

The Appalachian Trail Conservancy (ATC) invites hikers, members and friends of the Appalachian Trail (A.T.) to attend its Hiker Happy Hour celebration from 5:30 to 7:30 p.m. on Sept. 13 at Salvage Station in Asheville. This event is free and open to the public and offers an opportunity for A.T. enthusiasts to share their passion for the Trail while enjoying good food and drinks. ATC staff will be on site to answer questions about the Trail and provide hiking tips.

"We enjoy getting to know people in our community who love or want to learn about the Appalachian Trail," said Morgan Sommerville, the ATC's southern regional director. "This event also gives people the chance to learn about upcoming volunteer opportunities, workshops centered on hiking and Leave No Trace principles and the latest news from the Trail."

Attendees who are ATC members will also be able to participate in a raffle for a variety of A.T.-themed prizes. Those who are not currently members will be able to apply at the event with an ATC staff member. For more information about this and other upcoming events, contact the ATC's Southern

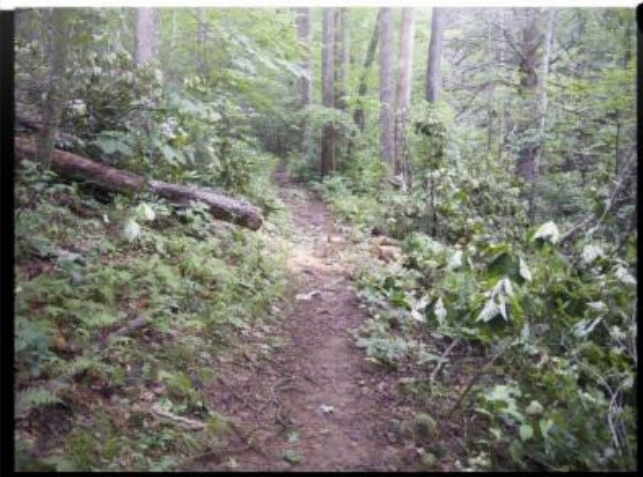
Regional Office at 828.254.3708 or visit [appalachiantrail.org/events](http://appalachiantrail.org/events). The ATC was founded in 1925 by volunteers and federal officials working to build a continuous footpath along the Appalachian Mountains. A unit of the National Park System, the A.T. ranges from Maine to Georgia and is approximately 2,190 miles in length. It is the longest hiking-only footpath in the world. The mission of the ATC is to preserve and manage the Appalachian Trail - ensuring that its vast natural beauty and priceless cultural heritage can be shared and enjoyed today, tomorrow, and for centuries to come. For more information, please visit [www.appalachiantrail.org](http://www.appalachiantrail.org)

## Buckspring Trail, 8-19-2016

9:35AM



9:55AM



CMC History By Rocko Smucker



## "The woods! The woods!-Chase Ambler, 1906 and "Hikers Shot on Sight," 1971

flowers and the best the house affords is yours.

In the city we live and act as if our lives depended upon knowing what all the world is doing. If the mail is late we are cross, if our morning or evening paper does not appear, the day is started or ended wrong - we are after the almighty dollar and never at rest. But the woods! the woods! At Rattlesnake Lodge we forget that mail men exist; newspapers are good to wrap things in but rarely have more than the headlines read. It is early to bed and early to rise. We grow to know what is meant by that saying -"Our lives are full of troubles, most of which have never happened." The woods! The woods! oh, that my children could grow up to combine the necessary knowledge of the world to be acquired only in cities and education, with the freedom, the health, the strength, the self-reliance, the manhood and the knowledge of nature which can only be had in nature's great university-- forest and stream.

At Rattlesnake Lodge our motto is: "Ride hard, shoot straight, strike from the shoulder, and tell the truth."

C. P. Ambler

## Friends Of The MST Announces 2016 Photo Competition

### **Danny Bernstein**

We live, hike and maintain one of the most beautiful sections of the Mountains-to-Sea Trail. Now let's show it off to the whole MST world.

Friends of the MST (FMST) invites us to submit photos taken along North Carolina's Mountains-to-Sea Trail -- from the Great Smoky

Mountains to the Outer Banks, and all the unique and beautiful people and places in between. Nearly all of the amazing photos on FMST's web page and in their trail guides are submitted by people like you and me!

Winning photographers will receive cash prizes and gift cards for outdoor gear, and the chance for your photos to be published online and in print. First prize is \$150 cash, second a \$75 gift card from Great Outdoor Provision Co., and third is a \$50 gift card from GOPC.

A panel of prominent experts will judge photos in two categories:

- View from the Trail
- People on the Trail.

Remember those photos of hard-working and muddy trail builders. They'll impress the judges.



Deadline for submitting photos is Monday, October 31, 2016 at 11:59 pm but don't wait until the last minute. They are accepting entries now.



Send eNews articles to [eNews@carolinamountainclub.org](mailto:eNews@carolinamountainclub.org)

The newsletter usually goes out the last Friday of every month. The deadline to submit news is the Friday before it goes out.

The next issue will come out on Friday, September 30, so send your news by Friday, September 23, to [eNews@carolinamountainclub.org](mailto:eNews@carolinamountainclub.org). Include your email address at the end of your story. Thank you.

Westgate parking - Park in the northernmost part of the lot - past EarthFare, in the last row of parking spaces.

To join Carolina Mountain Club go to: [www.carolinamountainclub.org](http://www.carolinamountainclub.org). Click on "Join CMC" on the right side. Follow the instructions. Send all address and email changes to Dennis Bass at [dbass3607@gmail.com](mailto:dbass3607@gmail.com). Do not re-subscribe yourself to the eNews. That will be done automatically. If you are a non-member subscriber, you need to go back to the eNews and make the change yourself.

Carolina Mountain Club | P.O. Box 68  
Asheville, NC 28802



[CMC Calendar](#)   [Hike Reports](#)   [Future Hikes](#)