



# Carolina Mountain Club

Since 1923

eNews | Hike . Save Trails . Make Friends

March 2016

## **In This Issue**

[Spring Social!](#)

[Proposal For National Recreation Areas In WNC](#)

[Turn Pictures In For Spring Social](#)

[GSMNP Park Schedule](#)

[Book Review: National Parks In The South](#)

[CMC History](#)

[Tribute To Gaydish](#)



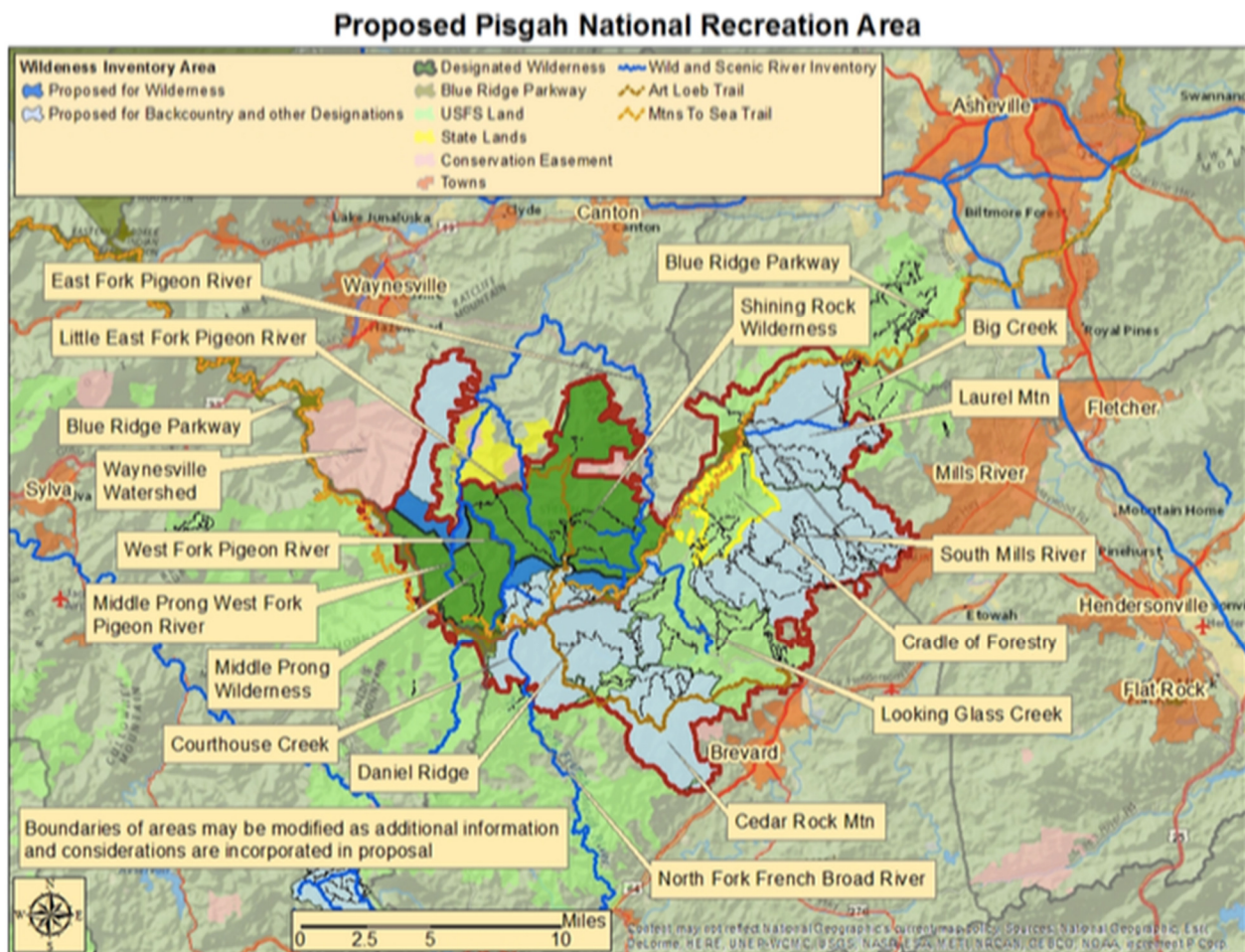
**Spring Social - April 23 - Get Your Tickets Now**

The eleventh annual Spring Barbecue will be held at the N.C. Arboretum on Saturday, April 23, from 2:30 until 8:30. This year Danny Bernstein will talk about the National Park Service Centennial. She recently published a book about the national parks in the south. (See the review of the book in this issue.) Six park superintendents from local national parks also have been invited to share information about their parks.

The schedule is: 2:30 p.m. - Casual hike around Lake Powhatan. The hike will be about 5 miles and will leave from the front of the main building at the arboretum. At 3 p.m. a Wildflower hike on arboretum trails will be held. This hike will be about 3 to 4 miles long, and will leave from the front of the Education Center of the arboretum.

At 5 p.m. the social hour will start in the Education Center of the arboretum. Beer and wine will be available for purchase. At 6 p.m. Bubba Q will start serving dinner. The menu will include barbecue pork, chicken, sides and dessert. Vegetarian lasagna will also be available. The program will start at 7.

Tickets for dinner cost \$20 each. Buy your ticket by April 18, by either logging into the CMC website and paying by credit card or mailing a check to CMC PO Box 68 Asheville, NC 28802. If you have questions, call Les Love at 658 -1489 or email him at leslove55@gmail.com



## Proposed National Recreation Areas For Western North Carolina

By Tish Desjardins

There are two proposed National Recreation Areas for western North Carolina. They are: Pisgah National Recreation Area and Grandfather National Recreation Area. The idea for these proposed NRAs began with discussions between the Wilderness Society and a few outdoor recreation enthusiasts who wished to bicycle on certain trails that happened to be in Wilderness Study Areas in the Grandfather Ranger District. Wilderness Study Areas are forest areas that have characteristics that allow them to be possibly nominated for future Wilderness Areas. Because actual designated Wilderness Areas are for only low impact recreation activities, such as, walking, part of the original Grandfather Wilderness Study Area is now proposed to be changed so that many types of recreation can be accommodated.

The NRA idea has now grown to the point that approximately forty-three outdoor organizations (recently, includes Carolina Mountain Club) have signed on to a Memorandum of Understanding that has recently been submitted to the U.S. Forest Service. Most of the signing organizations are also represented at the Nantahala- Pisgah Forest Partnership (CMC is a member). And, the growth of the idea now includes both Grandfather and Pisgah Ranger Districts. Because not all National Recreation Areas are designed with the same format, there will be many forest users' groups consensually agreeing to the best practices for recreation management. Further benefits included in the proposed National Recreation Areas will be designated Wilderness areas for solitude and, also, restoration areas which will benefit the forests' native vegetation and wildlife habitat. Under the proposals, timber production will cease to occur. If there is enough support from the regional governments and the national reps, the establishment of the National Recreation Areas will require approval from our U.S. Congress. (Attached are outlined maps for both areas and the Memorandum of Understanding.



The CMC and CMC partners frames of patches have been hung in the Special Collections room at UNCA Ramsey Library. (Rocko Smucker)



Little Cataloochee Chapel

## Great Smoky Mountains National Park In The Centennial Year

By Danny Bernstein

If you live in Western North Carolina, you are lucky enough to live close to Great Smoky Mountains National Park, the most visited park in the U.S. The Smokies covers over half-a-million acres of wildness, not wilderness. I make a distinction between untouched wilderness, like certain parts of Alaska, and wildness, land that's returning to its natural state and feels wild. If you live in Western North Carolina, you are lucky enough to live close to Great Smoky Mountains National Park, the most visited park in the U.S. The Smokies covers over half-a-million acres of wildness, not wilderness. I make a distinction between untouched wilderness, like certain parts of Alaska, and wildness, land that's returning to its natural state and feels wild.

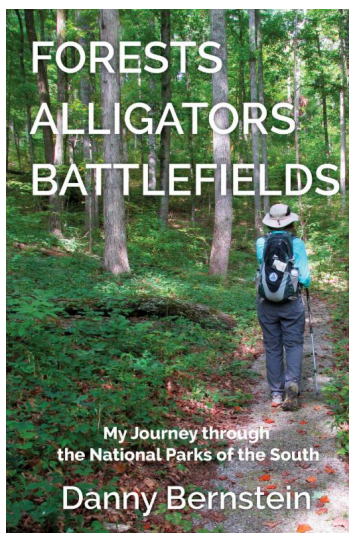
People have affected every area in the Southeast. Native Americans have lived here since time immemorial. Europeans settled and built houses and towns. They hunted, cleared the land, farmed, extracted minerals, and put in roads wherever they could. A combination of drought, logging, and wildfires denuded the mountain slopes. When you discover a chimney or a house foundation on a trail, you realize that park visitors are not the first ones here, but still the park feels wild. Just as important for CMC folks, the park offers a network of 803 miles of trail. Mile for mile, park trails are easier to negotiate than the neighboring forests. Trails are well maintained, signposted, and documented. The Smokies is a hiker's park. Over the years, I've hiked and re-hiked many trails and still I find new things. Over 460 people have hiked all the trails in the park and have joined the Smokies 900 Club, (<http://900miler.smhclub.org/>) including many CMC members. Like most hiking challenges, completing this feat takes more organization and perseverance than strength. In this centennial year, Superintendent Cassius Cash has challenged hikers to walk at least 100 miles in the Smokies. If you do, you'll be invited to a reception in December and get a pin. Interested? The details are at <http://www.nps.gov/grsm/planyourvisit/gsmnp-hike-100.htm> Please send your pictures to the CMC Spring Social Slide show. Look at the CMC website for these details, the deadline is April 1.



# Great Smoky Mountains National Park Spring Opening Schedule

Alum Cave Trail Closed May 2 to Nov. 17

Great Smoky Mountains National Park officials announced the spring opening schedule for park facilities for the 2016 season. As part of the schedule, officials also announced the Alum Cave Trail Restoration schedule which includes a Monday through Thursday closure of Alum Cave Trail and the Mt. Le Conte Backcountry Shelter beginning May 2 through November 17. Due to the construction process on the narrow trail, a full closure is necessary for the safety of both the crew and visitors. The shelter will be closed during the week to accommodate youth crews involved in the restoration work. The trail and shelter will be fully open each week on Friday, Saturday, and Sunday throughout the restoration process.



## ***Forests, Alligators Battlefields - National Parks Of The South*** ***By Bobbi Powers***

Danny Bernstein has been on the move with laptop in hand again. This prolific author of three well-received hiking books - Hiking the Carolina Mountains, Hiking North Carolina's Blue Ridge Mountains, The Mountains-to-Sea Trail Across North Carolina: Walking a Thousand Miles through Wildness, Culture and History - has penned a new travel narrative. There is something for everyone within its 296 pages. *Forests, Alligators, Battlefields: My Journey through the National Parks of the South* is a travel book filled with fascinating history lessons, a personal diary of some of Danny's favorite places, the colorful characters she meets along her journey through 71 national park units in the Southeast, and a multitude of fascinating facts guaranteed to have you thinking, "Gee, I've been there, and I didn't know that!" Throughout the book we see Danny's impeccable eye for detailed, accurate research, as well as her gift for gab with those she meets along the way and her sense of humor.

If you did not like history in high school, this is the book for you. Or, if you are an armchair traveler, this book is for you. But, of course, Danny hopes you will start searching out and visiting many of these sites during the National Park Service's 100th Anniversary year. Danny brings the sights (and sites) to life. Eighty short, but colorful, vignettes cover such well-known national park units as Mammoth Cave in Kentucky, to lesser-known sites like Horseshoe Bend National Military Park in Alabama which chronicles "one of the great American victories of the War of 1812" to this writer's never-before-heard-of unit, Russell Cave National Monument in northern Alabama where native peoples lived for almost 9,000 years. In Russell Cave's two-page overview, Danny crams a wealth of information about our nation's pre-history. Moving ahead to the Twentieth Century, Danny delves

into stories of the Wright Brothers, New Orleans Jazz, Jimmy Carter, and the Tuskegee Airmen, among others. This book is an homage to Danny's insatiable curiosity and her love for our national parks. Let her take you along on the journey. You won't regret it. The official book launch for *Forests, Alligators, Battlefields: My Journey through the National Park Units of the Southeast*

will be held at Malaprop's Bookstore in downtown Asheville on April 8 at 7 pm. Danny will be talking about her book at the CMC Spring Social on April 23 and will donate \$2 of every book sold that evening to the CMC.



## CMC History: Prizes And Article

**By Rocko Smucker**

CMC History Brief:

Games played at November 8, 1952 CMC Board Meeting. The club had 69 members at that time and a cash balance of \$69.94. Following the acceptance of slate of officers, "Three games were played.



1. In 10 minutes write all the trips in 1952 that you can remember. Winner-Bill Kirkman who was presented with a pair of red work gloves.

2. Feeling objects in a bag.

John Lindsley, Eleanne Bown, Zeffie Nichols, and Mrs. Lindsley got all 18 right, but Mrs. Lindsley guessed the lucky number and was presented a red bandana.

3. Unscramble 10 mountain peaks in 10 minutes

Elizabeth Parker was successful with all 10 and was presented a can of Bean's Weatherproofing Grease.

To see a 1970 article about CMC that appeared in The Charlotte Observer click

here: <http://rockocmchistory.blogspot.com/>



## Gaydish left legacy of friendship, love of wild places

By Peter Barr

I have never known an individual as sincere and genuine as Kayah. I think that may be because no one has ever been so personally fulfilled by the combination of the outdoors, friendships, and a devotion to others.

No singular story - and certainly not this column - could ever fully do justice in portraying the person that Kayah was. Its scope - her love for this region, the depth of the relationships she held, and her selflessness to her friends, her children, and her favorite wild places - is simply too vast. To read more: <http://www.blueridgenow.com/article/20160228/ARTICLES/160229905?Title=Kayah-Gaydish-left-legacy-of-friendship-love-of-wild-places>

## Volunteers Sought For Camp

Laurel Ridge is looking for counselors for their 2nd annual Eco Mission Camp for middle school students, June 12-18, 2016. Campers will travel off-site during the morning and early afternoon to complete work projects and experience traditional camp activities in the late afternoon and evening. Laurel Ridge is a Christian camp in Laurel Springs, in northwestern NC. Information on volunteering: <http://www.laurelridge.org/volunteer-at-laurel-ridge.html>



Send eNews articles to [eNews@carolinamountainclub.org](mailto:eNews@carolinamountainclub.org)

The newsletter will go out the last Friday of every month. The deadline to submit news is the Friday before it goes out.

The next issue will come out on Friday, April 29, so send your news by Friday, April 22, to [eNews@carolinamountainclub.org](mailto:eNews@carolinamountainclub.org). Include your email address at the end of your story. Thank you.

Westgate parking - Park in the northernmost part of the lot - past EarthFare, in the last row of parking spaces.

To join Carolina Mountain Club go to: [www.carolinamountainclub.org](http://www.carolinamountainclub.org). Click on "Join CMC" on the right side. Follow the instructions. Send all address and email changes to Gale O'Neal at [gogalemail@gmail.com](mailto:gogalemail@gmail.com). Do not resubscribe yourself to the eNews. That will be done automatically. If you are a non-member subscriber, you need to go back to the eNews and make the change yourself.

Carolina Mountain Club | P.O. Box 68  
Asheville, NC 28802



[CMC Calendar](#)   [Hike Reports](#)   [Future Hikes](#)

