



# Carolina Mountain Club

Since 1923

eNews | Hike . Save Trails . Make Friends

September 2018

---

## In This Issue

[Help celebrate the Mountains-to-Sea Trail's 41st birthday](#)

[Hiker Happy Hour!](#)

[NATIONAL PUBLIC LANDS DAY](#)

[PUBLIC RELATIONS GROUP NEEDED](#)

[Les Love Interview](#)

[GPX Tracking Skill](#)

[Pathways--A Candidate Forum on the Buncombe County Trail System](#)

[Map Navigation Class](#)

[SAVE THE DATE FOR THE ANNUAL DINNER](#)

[Personal Hike Log](#)

---

## REMINDER!

### Help celebrate the Mountains-to-Sea Trail's 41st birthday Sunday, September 9

Help celebrate the Mountains-to-Sea Trail's 41st birthday this weekend by taking a hike. CMC is offering two MST hikes on Sunday, September 9th. Join one of these hikes or plan your own MST adventure. And don't forget to go to <https://mountainstoseatrail.org/birthdayhike> to record your experience.

---

## Hiker Happy Hour!

### Carolina Mountain Club and Appalachian Trail Club

Please join fellow CMC and ATC members and area outdoor enthusiasts on Tuesday, September 18 between 4 and 8 PM, at the Salvage Station, 468 Riverside Drive in Asheville for an evening of socializing. CMC and ATC will both promote hikes and trail maintenance in WNC. The Salvage Station will donate 10% of food and beverage proceeds during those hours to the CMC.

The event is open to the public. Stop by and say "HEY!" at our info table where volunteers will answer questions from potential new hikers and trail volunteers. Invite your friends and neighbors for a fun evening. Stay for a beer or have dinner - remember 10% of proceeds will go to CMC!

Ron Navik  
CMC Councilor for Trail Maintenance  
ron.navik@gmail.com  
cell 585-662-8047

# NATIONAL PUBLIC LANDS DAY

Join the Pisgah National Forest in celebrating National Public Lands Day at the Appalachian District Ranger Station on September 22.

## PUBLIC RELATIONS GROUP NEEDED

We Need YOU! Just 10 members who enjoy sharing our amazing club.

CMC is contacted regularly, especially during the warm months, to set up information tables at events. Opportunities like these provide great PR, connect CMC with our community, and can be great fun as these are often in a casual festive-type atmosphere.

We are looking for at least 10 volunteers to form a PR Group. Members could rotate participation in these types of events. Often a CMC council member will also be attending. Usually only 2 to 4 people are needed per event depending on the length.

Responsibilities may include:

- Making arrangements for picking up the display board and packet of information from our membership chair (currently Lynn Saul).
- Contacting event sponsor to get times, location, setting up and taking down.
- Promoting CMC by sharing information about what we do: maintenance, the YPC, Meetup, conservation, membership, etc.

Here is our latest request from our maintenance crews which is a fundraiser for CMC :

Location: Salvage Station is located on 468 Riverside Drive in Asheville.

When you arrive, just follow the signs for vendor check-in.

Load-in/Load-out: Load-in begins at 10:30 a.m. on Sunday, September 23.

Your space needs to be set up no later than 11:30 a.m.

Please contact Jan Onan [cmceducation4u@gmail.com](mailto:cmceducation4u@gmail.com)



## Let's get to know Les Love

By Bobbi Powers

Les Love is a *lovely* human being. We spent a *lovely* afternoon sitting in the shade at the Folk Art Center drinking root beer and eating cookies while Les told me story after story about himself in that slow southern drawl. He summed up his life by saying, "I like doing things that benefit other people."



The really BIG thing Les has been doing over the past five years that exemplifies his motto is helping get the third edition of Walt Weber's *Trail Profiles and Maps from the Great Smokies to Mount Mitchell and Beyond* from concept to printing. This entailed getting the Cherokee nation's permission to use their tribal road - no small feat - but Les is a persuasive, slow-talkin' man. Also contributing to the bigness of the undertaking was Walt's desire to extend the book to 190 miles from Clingman's Dome to Highway 80, many miles had to be measured with a wheel - much more accurate than any GPS - and just the way Walt measured every mile in the previous two books. Over a 2 1/2-year period, Les and three other CMCers (Rich Evans, Bob Beach, and Stu English) wheeled every mile of those new sections. Now that the book is a reality, it can be purchased on Amazon and soon will be in Parkway and outdoor stores and at a discount from some club members.

This was not Les's first foray into benefitting others. The Spring Social is his "baby." The idea was born at the 50-50 birthday party he and wife Catherine hosted at their house 13 years ago. (Their birthdays are 16 days apart.) Soon after, while hiking on Roan Mountain, several hikers who had attended the party suggested he make it an annual affair. Sherman Stambaugh said, "Les, that's a great idea, but it's too much work. Have it at the Arboretum." And just like that, Les became the face of the annual Spring Social held at the NC Arboretum.

Les's Methodist church in Weaverville is also a beneficiary of his largesse. He picks and chooses projects that interest him and is generous in monetary donations as well as time.

Les says he owes a "big debt of gratitude to CMC" for two reasons. First, in 1996, soon after moving to Weaverville, he found himself divorced and sharing custody of his two children. CMC offered him a hiking group and a new set of friends. CMC also led him to Catherine, his soul mate, and the two have been happily married for 15 years.

Les's preference for being outdoors began in childhood. When his dad told Les and his three brothers to chop tobacco and they whined, "Do we have to?" Dad's reply was, "No,

you get to." That philosophy struck a chord in Les; being outdoors doing anything was better than being inside. Les went on to get a forestry degree in college, working summers for the Forest Service while in school and then getting work with a paper company in the South where he managed logging operations for several years. He spent a year in Australia as a visiting forester and considered it a working vacation.

At age 30, through a set of fortuitous events, Les founded Foliage Concepts and started a career placing tropical plants in high-end office settings. He says he can't see himself ever retiring because "It's like having a hobby that you get paid to do."

I asked Les if he had a preference for hiking or maintaining. Without hesitation, he answered, "Maintaining." As he puts it, "I love doing projects. Fixing stuff is so important to me." He is still that east Tennessee farm boy at heart.

Les's love of being outdoors and preserving the forests and trails led him to serve four years on the NC Trails Committee, and he is currently on the Board of Friends of the Mountains-to-Sea Trail. But again, his preference is for outdoor projects. So, he has taken on the rehabilitation of Snowball Trail near Craggy Gardens where he can get down and dirty and make a difference with no fanfare but with much self-satisfaction. This is the essence of Les Love, a man who benefits others with no need for accolades.

I hope this article gives some much-deserved recognition to a big-hearted man who lives a good life, is generous and kind. I loved interviewing and learning a lot about one of CMC's biggest cheerleaders and one of its hardest workers.

---

## GPX Tracking Skill - Monday, September 24th, 2018

CMC Members are cordially invited to a gpx hike tracking presentation at REI in Biltmore Park on Monday September 24, 2018 at 7:00 pm. The program will be led by CMC hike leader Bob Levy. He will demonstrate how to download a CMC gpx hike track to AllTrails and the Motion-X iPhone apps. Bob will also show how to use a gpx file to explore hundreds of our beautiful western North Carolina Mountain hiking trails. And he will explain how AllTrails on your computer can be applied to modify existing tracks and create new ones.

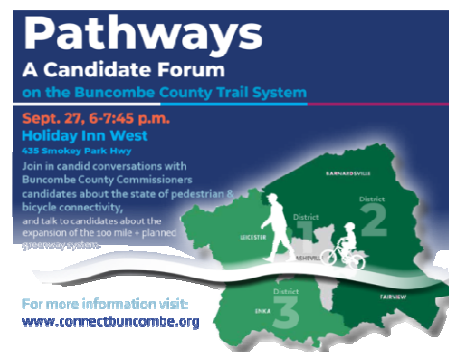
There is no cost to attend, but CMC members must RSVP by emailing Bob Levy at [RLEVY@CATO.ORG](mailto:RLEVY@CATO.ORG)

---

## Pathways--A Candidate Forum on the Buncombe County Trail System

Are you interested in what the candidates for County Commissioner have to say about greenways and trails in Buncombe County? Then plan to attend *Pathways--A Candidate Forum on the Buncombe County Trail System*. Connect Buncombe, a greenway advocacy organization, is hosting the forum in coordination with a partnership of organizations that support a connected system of bicycle and pedestrian pathways throughout Buncombe County. The focus of the Forum will be the Buncombe County Greenways and Trails Masterplan, a blueprint for a connected non-motorized trail system running throughout the County that will provide environmental protections, improve health through recreation, and have a positive economic impact.

The Forum will take place on **Thursday evening, September 27, 2018** from **6:00 to 7:45 PM** at the **Holiday Inn West, 435 Smokey Park Highway, Asheville, NC**. The public is invited to attend and actively participate in question and answer sessions with each candidate.



---

## Map Navigation class offered Oct 12th & 14th 2018

**Limit of 12 participants. Hike leaders will be considered first, and others will be placed on a wait list. Contact Jan Onan at [janonan59@gmail.com](mailto:janonan59@gmail.com)**  
**Part 1 - Indoors Where Frugal Backpacker at Westgate When. Friday Oct 12, 2018 7:00-9:00 pm**  
**Part 2 - Outdoors Where: TBA When Sunday**

**Oct. 14 9:30 – 3:00pm What to bring both days: A base-plate compass for map work (Will find out if we can buy at Frugal during the evening class) A notebook Sunday bring A pocket-sized notebook for hands free learning and your compass Hiking gear including lunch, water, & snack Description: Class will include an introduction to the UTM coordinate system, topographic map reading, how to use a compass alone and in conjunction with a map to orient and navigate, as well as how to plan and execute an off trail route.**

## **SAVE THE DATE FOR THE ANNUAL DINNER! Saturday, November 3**

Please save the date for our annual dinner to be held at the Doubletree Biltmore Village on Saturday, November 3, 2018. Our guest speaker will be Jennifer Pharr Davis.

### **Personal Hike Log in Member's Portal**

By Tim Carrigan

The Personal Hike Log within the Member's Portal continues to grow in monthly usage. It gives members the opportunity to log hikes and track hike miles, where and when.

Many members have logged hikes by using the hike search and on the page with individual hike reports is an icon Add Date. If you select this option it automatically knows the date, miles and hike name. Some hikes have the identified Challenge specifics which also get logged. Example, Hike #151, Big East Fork to Shining Rock, fulfills two P400s, Old But Know & Shining Creek and a SB6K, Shining Rock. Any hike you log allows you to add Challenges. For those who enjoy using GPS, logged hikes also allow you to upload your .gpx files. Within the Modify Profile on the main page we've added 2 new Privacy Options to indicate whether you want to allow other members to view your personal hike histories and/or share your GPS file.

If you've been on scheduled hikes using a GPS and it's one of 465 club hikes that is missing a GPS file or the original lacks elevation, this is your opportunity to contribute. Click on the GPS icon and switch from Available to Missing. Each hike will have a link to [Add] which you can click to log the hike and upload your .gpx file.



The eNews is published on the first Friday of each month. Articles are due on the last Friday of the previous month. send your news to [eNews@carolinamountainclub.org](mailto:eNews@carolinamountainclub.org). Please limit articles to no more than 1,000 words. You may send up to two photos as jpg attachments.

To join Carolina Mountain Club go to: [www.carolinamountainclub.org](http://www.carolinamountainclub.org). Click on "Join CMC" on the right side. Follow the instructions. Send all address and email changes to Dennis Bass at [dbass3607@gmail.com](mailto:dbass3607@gmail.com). Your email changes will be automatically reflected in eNews delivery.

Carolina Mountain Club | P.O. Box 68  
Asheville, NC 28802



[Let's Go!](#)

[CMC Calendar](#)

[Hike Reports](#)  
[Hikes](#)

[Future](#)