



# Carolina Mountain Club

Since 1923

eNews | Hike . Save Trails . Make Friends.

December 2021

## Max Patch Update and National Public Lands Day Report

by Paul Curtain

Much good has happened this year at Max Patch, and quite a lot of it is due to the work of CMC members. Most of you would have seen the devastating drone picture taken last fall of the tent city on top. Since the Forest Service order implemented July 1, 2021, the situation has changed drastically. Here is the first picture and then one taken a year later from a similar vantage point. What a difference!

To read more and for great pics, [click here](#).

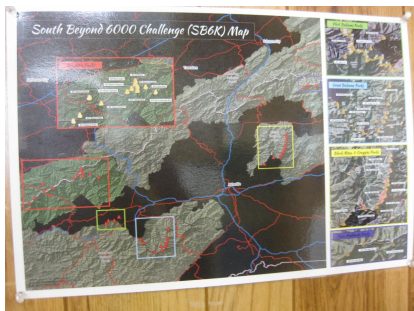
## CMC's Natural Resources Team Helps at Max Patch

by Barbara Morgan

During November, our team took on a new task – planting new, beneficial, and beautiful plants - rather than working on invasive species removal as we have done in the past. Coordinated by Matt Drury of the ATC, the project involves establishing a large number of pollinator plants on the high ridgeline of Max Patch where the A.T. runs. Once they get large enough to bloom, they'll attract bees, butterflies, moths, hummingbirds, and other beneficial creatures to transfer pollen from flower to flower.



To read more, [click here](#).



## South Beyond 6000 Peaks

by Les Love

For those of us who are hiking the South Beyond 6000 peaks, in case you don't already know about these neat maps, you can order them from Red Hot Mapping at <https://redhotmapping.com/products/south-beyond-6000-challenge-sb6k-scratch-off-map> (we're going to frame ours to hang on the wall!) Redhot Mapping also has maps for the Smokies and is doing one for the MST. Very reasonably priced and high quality. The peaks are shown in a list on the back.

## Hiking for Newcomers

by Kathy Kyle

In October, the Diversity and Inclusion Committee held two Zoom presentations titled *Hiking for Newcomers* to introduce new hikers to hiking. Afterward, members of the committee offered two short easy hikes (less than 3 miles) for those attending the presentation. As a result, three of the attendees joined the Carolina Mountain Club.



The committee will continue to hold introductory presentations and introductory hikes quarterly. The next presentation is Monday, Jan. 10, at 6 p.m. via Zoom. Zoom sessions will also be held in April 2022, July 2022 and October 2022. (Specific dates for these months will be set and posted at a later date.) If you know of groups or individuals who would be interested in this presentation, please contact the committee at [cmcnwhikers@gmail.com](mailto:cmcnwhikers@gmail.com)



## Parkway Closures

by Kathy Kyle

Fall and winter means sections of the Blue Ridge Parkway may be closed. Check the Blue Ridge Parkway website for closures before leading a hike that requires parkway access. The weather fluctuates during fall and spring and the parkway can be closed even though the weather looks fine at lower elevations.

Here is the website link:

<https://www.nps.gov/blri/planyourvisit/roadclosures.htm>

## SHARE YOUR PHOTOS AND STORIES

by Jan Onan

We are providing CMC hike leaders and crew members with an easy way to show off your great outings through photos and stories on our CMC Instagram. John Bellizia has graciously volunteered to post your photos to CMC's Instagram page which is set up to automatically post on CMC's FaceBook page.



Whether you are leading a hike or working on a trail, you can now send your photos with a line or two explaining the scene to John. To those of you who already post on our CMC FaceBook page, keep posting! If you want, you can still send to John so he can make an Instagram story which does not repost to our FB page.

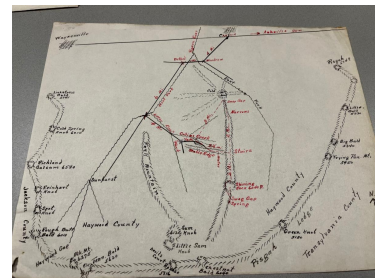
Send to [jhonbellizia@gmail.com](mailto:jhonbellizia@gmail.com)

We look forward to seeing all your faces, scenery, adventures and trail work on our CMC Instagram page!

## Hike report to Shining Rock Made by Carolina Appalachian Trail Club on Sept. 20, 1931 and led by Walter M. Watts

Submitted by Danny Bernstein

For a fascinating lengthy report by one of our earliest members, [click here.](#)



Carolina Mountain Club eNews is published on the first Friday of each month. Send your news to [eNews@carolinamountainclub.org](mailto:eNews@carolinamountainclub.org). Articles are due on the last Friday of the previous month. Please limit articles to no more than 1,000 words. You may send up to two photos as jpg attachments.

To join Carolina Mountain Club go to: [www.carolinamountainclub.org](http://www.carolinamountainclub.org). Click on "Join CMC" on the right side. Follow the instructions. For all address and email changes, log in, select "Modify Profile", make changes and click on "Update Member" or email Dennis Bass at [dbass3607@gmail.com](mailto:dbass3607@gmail.com). Your email changes will be automatically reflected in eNews delivery.

---

Carolina Mountain Club | P.O. Box 68  
Asheville, NC 28802



[Let's Go!](#)



[CMC Calendar](#) [Hike Reports](#) [Future Hikes](#)

---